



# AGENCY BUDGET NOTES

For FY 2023

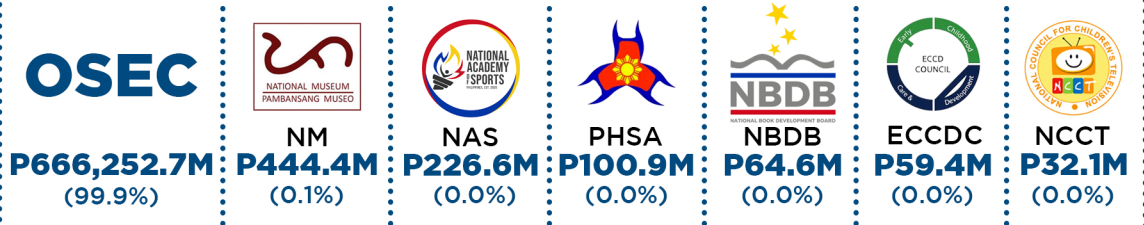


## DEPARTMENT OF EDUCATION

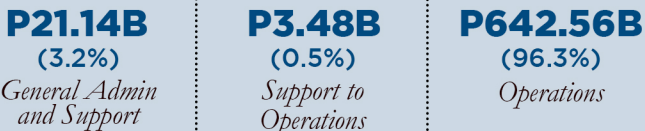


**P667.18B**  
TOTAL NEW APPROPRIATIONS FOR 2023

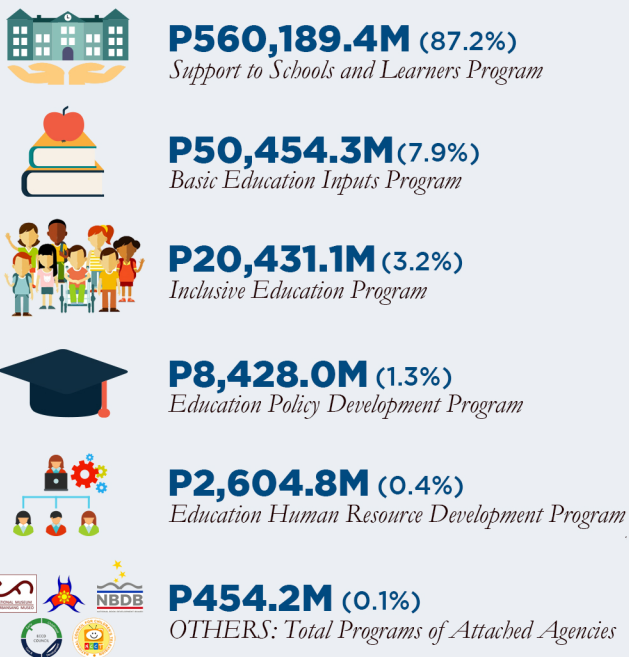
### ALLOCATION BY AGENCY



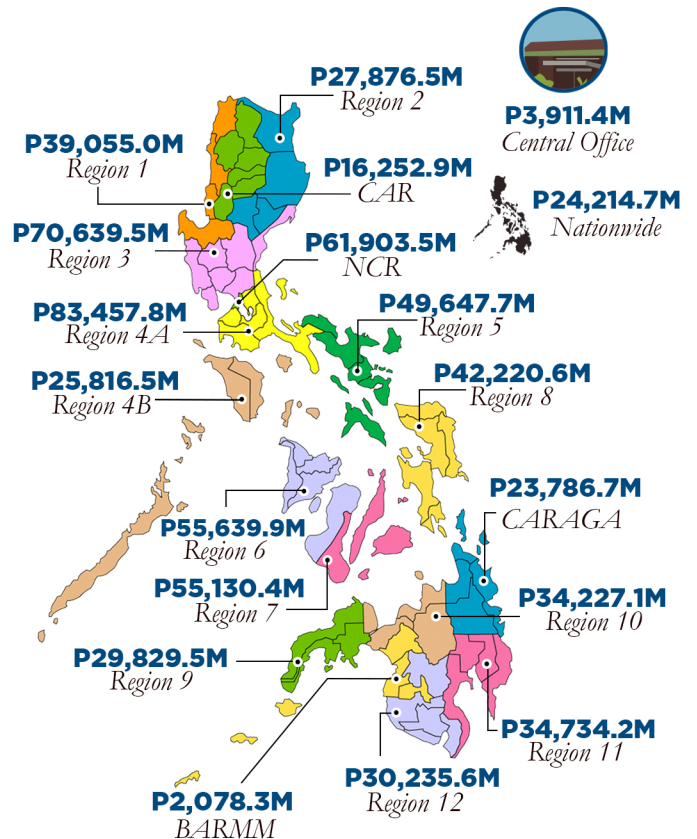
### COST STRUCTURE



### BREAKDOWN OF OPERATIONS BUDGET



### REGIONAL ALLOCATION OF THE 2023 EXPENDITURE PROGRAM (P710,657.9M)



# QUICK FACTS

## ENROLLMENT IN BASIC EDUCATION

Sector	SY 2020-2021	SY 2021-2022	Difference	% Change
Public	22,712,409	23,900,041	1,187,632	5.2%
Private	3,375,748	3,212,728	(163,020)	-4.8%
State Universities and Colleges/Local Universities and Colleges (SUCs/LUCs)	118,755	103,551	(15,204)	-12.8%
Philippine Schools Overseas	20,110	15,775	(4,335)	-21.6%
Alternative Learning System (ALS)	599,365	239,616	(359,749)	-60.0%
<b>Total</b>	<b>26,826,387</b>	<b>27,471,711</b>	<b>645,324</b>	<b>2.4</b>

Notes: a). In order to strengthen support for DepEd in the nationwide rollout of Senior High School (SHS), state universities and colleges (SUCs) and local universities and colleges (LUCs) which are run by LGUs, are authorized to operate SHS. SUCs and LUCs help augment the supply in regions where there are not enough SHS providers. DepEd issues SHS permits to SUCs and LUCs endorsed by CHED. b). The Alternative Learning System (ALS) is a parallel learning system in the Philippines that provides opportunities for out-of-school youth and adult (OSYA) learners to develop basic and functional literacy skills, and to access equivalent pathways to complete basic education which was institutionalized by virtue of Republic Act No. 11510.

Source: DepEd, Data as of November 15, 2021 www.deped.gov.ph

## LEARNING LOSS DUE TO COVID-19 PANDEMIC AND SCHOOL CLOSURES

Impact	Global	PH
Estimated lifetime loss in earnings	\$17 trillion	\$30.7 billion
Estimated decrease in learning adjusted years of schooling (LAYS)	0.09 LAYS 7.8 (2020) to 7.71 (2021)	0.61 LAYS 7.49 (2020) to 6.88 (2021)
Estimated Increase in learning poverty rate	10 percentage points 53% (2019) to 63% (2021)	20 percentage points 70% (2019) to 90% (2021)

Notes: a) LAYS apply to preprimary, primary, and secondary education and is measured by the number of schooling a child can expect to obtain by age 18, adjusted by a country's average student achievement.; b) Learning poverty refers "being unable to read and understand short, age-appropriate text by age ten.

Sources: a). World Bank-UNICEF-UNESCO Report/Press Release, Dec. 6, 2021, <https://www.worldbank.org/en/news/press-release>; b) Learning and Earning Losses from COVID-19 School Closures in Developing Asia, Asian Development Bank, March 2022 ; c) Country Learning Poverty Briefs, World Bank, July 2021

## COVID-19 Vaccination



### Children / Learners

5-11 years old  
(As of 17 May 2022)

**17%**

2.5M out of  
14.5M population

12-17 years old  
(As of 22 March 2022)

**56%**

9.7M out of  
17.2M population

### Teachers and School Personnel

(As of 04 February 2022)

**80%**

779,002 out of 970,730  
population

Source: Department of Education, Philippine News Agency, Philippines Statistics Authority

## Percentage of PH Schools with Global SDG WASH Facilities, 2021

Water	<b>45%</b>	with drinking water from improved source
Sanitation	<b>74%</b>	with improved sanitation facilities, usable and in single-sex
Hygiene	<b>61%</b>	handwashing facilities with water and soap

Source: WHO/UNICEF Joint Monitoring Programme (JMP) Report, June 2022

Note: WASH – Water, Sanitation and Hygiene; indicators are based on Sustainable Development Goal (SDG) No.6 (Clean water and Sanitation)

## 4 QUALITY EDUCATION



## Sustainable Development Goal

Indicator	Baseline	Latest	Target by 2030
<b>Completion Rate</b>			
Elementary	93.1 (2016)	82.5 (2020)	100.0
Junior High School	80.9 (2016)	82.1 (2020)	100.0
Senior High School	81.0 (2018)	69.3 (2020)	100.0
<b>Internet Access (for online learning)</b>			
Population with exposure to social interaction in the internet	43.8 (2013)	73.9 (2019)	100.0
Population with exposure to research work/study in the internet	42.2 (2013)	63.6 (2019)	100.0

Source: Philippine Statistics Authority, PH-SDG Watch, April 2022 [psa.gov.ph](http://psa.gov.ph)

## HIGHLIGHTS

- ❑ The challenges confronting the country's basic education were identified in the Basic Education Sector Analysis (BESA) and are classified as issues in *access and efficiency, quality, and governance*. In response to these challenges, the Department of Education (DepEd) launched the 2022–2030 Basic Education Development Plan (BEDP 2030) - the first long-term plan of the Department for basic education, covering formal education from 5 to 18 years old and non-formal education for youth and adults. It is anchored on the goal of the Department under the *Sulong Edukalidad Framework* that all Filipinos can realize their full potential and contribute meaningfully to a cohesive nation through the protection and promotion of the right to quality education.
- ❑ *Expenditure Program.* The 2023 proposed total expenditure program of the DepEd amounts to P710.66 billion which is P77.33 billion or 12.2% higher than the spending level of P633.32 billion in 2022. The OSEC practically accounts for the entire budget of DepEd (99.9%) with an allocation of P709.70 billion. The proposed 2023 allocation for the OSEC will increase by P77.93 billion or 12.3% from 2022 which is almost equivalent to the overall growth in the DepEd budget.
- ❑ *New Appropriations by Cost Structure.* The proposed new appropriations of DepEd for 2023 will amount to P667.18 billion. The OSEC will receive 99.9% of the total new appropriations amounting to P666.25 billion. Among the attached agencies, NM will have the largest funding of P444.4 million followed by NAS with P226.6 million and PHSA with P100.9 million. The other three attached agencies will be allotted with less than P100 million for a combined amount of P156.1 million.
- ❑ In terms of cost structure, the biggest portion of DepEd's new appropriations will be allotted for Operations amounting to P642.56 billion or 96.3% intended for programs directly relating to the core mandate of the agency. General Administration and Support (GAS) will receive the second biggest allotment of P21.14 billion (3.2%) for the administrative management and operational support to agency operations. Finally, Support to Operations (STO) will be allotted P3.48 billion (0.5%) for expenses on staff or technical support needed for operations that do not directly produce goods or services to the agency's client group.
- ❑ *Allocation by Major Programs.* Practically 99.9% of the DepEd's 2023 budget for operations will be lodged with the OSEC. Out of the P642.56 billion, a total of P642.11 billion is allocated for the implementation of five (5) major programs, namely: a) Support to Schools and Learners Program (P560.19 billion); b) Basic Education Inputs Program (P50.45 billion); c) Inclusive Education Program (P20.43 billion); d) Education Policy Development Program (P8.43 billion); and e) Education Human Resource Development Program (P2.60 billion).

- ❑ *Status of COVID-19 Releases.* The *Basic Education-Learning Continuity Plan (BE-LCP)* is DepEd's major response and commitment in ensuring that learning continues despite the absence of face-to-face classes. Under *Bayaniban to Heal as One Act (R.A. 11469 or Bayaniban I)* and *Bayaniban to Recover as One Act (R.A. 11494 or Bayaniban II)*, a total of P16.41 billion was allotted for release to the DepEd primarily for the implementation of BE-LCP. Of this amount, P15.37 billion has been obligated with P14.55 billion or 94.7% disbursed as of 31 December 2021, thereby resulting in a balance of P1.04 billion unobligated allotment (P506.8 million from *Bayaniban I* and P529.9 million from *Bayaniban II*). The total obligated undisbursed allocation amounted to P822.2 million as of the reckoning date.
- ❑ *Budget Utilization and Unused Appropriations.* The overall OAR of the DepEd in 2021 is 96.7%, reflecting improvement in budget utilization from 94.0% in 2019 and 95.0% in 2020. The OSEC, NBDB, NCCT and NM all recorded improvements in OAR in 2021 compared with 2019 and 2020 budget utilization performance. The PHSA barely sustained its 79.7% OAR in 2020 to 79.5 % in 2021 and which are much lower than its 2019 OAR of 84%. The ECCDC, on the other hand, reflected an improvement of 14.7 percentage points with its 2021 OAR of 47.6% compared with 2020 OAR of 32.9%. However, ECCDC's budget utilization remains significantly low compared with its 2019 OAR of 86.0%.
- ❑ DepEd's unused appropriations in 2021 was P20.85 billion, representing roughly 3.3% of DepEd's total budget. This improvement is primarily carried by OSEC where 99.9% of DepEd's total budget is lodged. In the case of ECCDC, the OAR is still low at 47.6%, equivalent to unused appropriations of P256 million in 2021.
- ❑ *Compliance with Audit Recommendations.* OSEC posted 80.3% rate of compliance having implemented 171 of the 213 COA recommendations. Among DepEd attached agencies, NCCT posted the highest compliance of 90.0% (27 out of 30 recommendations) followed by NBDB with 68.8% (11 out of 16) and PHSA with 58.8% (10 out of 17). Both ECCDC and NM posted low compliance rates at 42.1% (8 out of 19) and 40.9% (36 out of 88), respectively.

## TABLE OF CONTENTS

	Page
I. Mandates and Organizational Outcomes	1
II. Sources of Appropriations	2
Table 1    Sources of Funds (DepEd), 2021-2023	3
III. Expenditure Program	3
Table 2    Expenditure Program by Agency, 2021-2023	4
Table 3    Expenditure Program by General Expense Class, 2021-2023	5
Table 4    Unfilled Positions by Agency, 2020-2023	5
Table 5    Regional Distribution of the DepED Budget, 2021-2023	6
IV. Spending for COVID-19 Initiatives	7
Table 6    Status of COVID-19 Releases to DepEd, as of 31 December 2021	8
V. New Appropriations	8
Table 7    New Appropriations by Agency and Cost Structure, 2023	9
Table 8    Summary of Programs for 2021-2023	9
VI. Performance Review	12
Table 9    Obligations-Appropriations Ratio and Unused Appropriations, 2019-2021	13
Table 10   Disbursement Rate by Agency, 2020-2021	13
Table 11   Budget Utilization by Major Program, 2021	14
Table 12   Performance Indicators of Major Programs, 2021-2023	16
VII. COA Findings and Recommendations	18
Table 13   Status of Implementation of COA Recommendations, 2021	19
ANNEX: Expenditure Program by Agency and by General Expense Class, 2021-2023	

# DEPARTMENT OF EDUCATION\*

## I. MANDATE AND ORGANIZATIONAL OUTCOMES

- 1.1 The challenges confronting basic education were identified in the Basic Education Sector Analysis (BESA) and are classified as issues in *access and efficiency, quality, and governance*. In response to these challenges, the DepEd launched the 2022–2030 Basic Education Development Plan (BEDP 2030) - the first long-term plan of the Department for basic education, covering formal education from 5 to 18 years old and non-formal education for youth and adults. It is anchored on the goal of the Department under the *Sulong Edukalidad Framework* that all Filipinos can realize their full potential and contribute meaningfully to a cohesive nation through the protection and promotion of the right to quality education. The BEDP 2030 is fully aligned with the commitments in the Sustainable Development Goals (SDG) 2030 and with the country's *Ambisyon 2040* long term vision. It puts forward four priority development areas:
- a. Pivoting to quality, ensuring that all learners attain learning standards in every key stage in the K to 12 program;
  - b. Expanding access to education for groups in situations of disadvantage to ensure inclusive and equitable quality service delivery;
  - c. Empowering learners to be resilient and to acquire life skills; and
  - d. Strengthening the promotion of the overall well-being of learners in a positive learning environment where learners exercise their rights and experience joy, while being aware of their responsibilities as individuals and as members of society.
- 1.2 The DepEd was established by virtue of Republic Act No.9155 or the Governance of Basic Education Act of 2001 to help attain the goal of achieving quality education for all. The law mandates the DepEd to formulate, implement, and coordinate policies, plans, programs, and projects in the areas of formal and non-formal basic education. The DepEd supervises all basic education institutions and provides for the establishment and maintenance of a complete, adequate, and integrated system of basic education relevant to the goals of national development.
- 1.3 The overall organizational outcome of the DepEd is the access of every Filipino to an enhanced basic education program enabling them to prepare for further education; and the world of work achieved. Under the DepEd are the following attached agencies and their respective organizational outcomes:

---

\* This document was prepared by Cynthia R. Lorenzo as input to the deliberations of the House Committee on Appropriations on the FY 2023 proposed National Budget. The report benefitted from discussions with and inputs of SPRS Director Rosemarie R. Sawali and SERB Executive Director Manuel P. Aquino, and from the overall guidance of CPBRD Director General Romulo E.M. Miral, Jr. PhD. and BPRS Director Pamela D. Manalo. The layout/design of the infographics by Carla P. Soriano is also acknowledged. The views, perspectives, and interpretations in this ABN do not necessarily reflect the positions of the House of Representatives as an institution or its individual members. A copy of this publication is available at the CPBRD's website: [cpbrd.congress.gov.ph](http://cpbrd.congress.gov.ph).

- *National Book Development Board (NBDB)* - Local book publishing industry developed
- *National Council for Children's Television (NCCT)* - Quality child-friendly television programs promoted
- *National Museum (NM)* - Management and preservation of museums, collections, and cultural properties strengthened
- *Philippine High School for the Arts (PHSA)* - Access of artistically gifted students to complete quality secondary education achieved
- *Early Childhood Care and Development Council* - Readiness of Filipino children for Kindergarten achieved
- *National Academy of Sports (NAS)* - Access of sports-inclined students to a quality and enhanced secondary education, and high-quality sports program in world class sports facilities enabling them to excel in their respective sports and pursue their chosen future education, profession or career achieved.

1.6 The 2023 national budget for education is dedicated to prioritizing the following:

- Improve the implementation of online and blended learning modalities in basic and higher education, and technical vocational education and training;
- Ensure safe return to in-person schooling (i.e., vaccination, well-ventilated classrooms, availability of water, sanitation, and hygiene or WASH facilities); and
- Enhance the implementation of student financial assistance programs

1.7 Consistent with the constitutional mandate to assign the highest budget priority to education, the 2023 proposed national budget allocates P852.8 billion to the education sector – reflecting the government's commitment to invest in human capital development and youth empowerment. Of this amount, P710.7 billion will go to the delivery and enhancement of basic education.

1.8 As emphasized by President Ferdinand R. Marcos in his Budget Message, the Filipino children must always be equipped with the best that the government and other stakeholders can provide as education is the only legacy that will never go to waste. The President stressed: *"The raw talent is there in our young people. It is up to our educational system to develop and to refine that great pool of talent."*

## **II. SOURCES OF APPROPRIATIONS**

2.1 The National Government (NG) adopted cash-based budgeting since 2019. In the cash-based system, all government programs and projects budgeted for the fiscal year should be implemented and delivered within the year. Payments can be extended up to the first quarter of the following year provided that the contracted goods have already been delivered, inspected, and verified within the fiscal year.

2.2 The total available appropriations of the DepEd in 2023 will amount to P710.66 billion, 9.7% higher than the P647.67 billion in 2021. Total available appropriations will consist of

P667.18 billion in new appropriations (93.9% share), P15.9 million supplemental appropriations, and P43.46 billion in automatic appropriations (6.1% share). Note that in 2023, given as of yet the absence of unused appropriations, the DepEd's total available appropriations and total obligations are similar and would be higher by P77.33 billion or 12.2% than the P633.32 billion in total obligations in 2022 (*Table 1*).

**TABLE I**  
**SOURCES OF FUNDS, 2021-2023**  
**DEPARTMENT EDUCATION**

Particulars	Amounts (In Million Pesos)			Share to Total Appropriations		
	2021	2022	2023	2021	2022	2023
New Appropriations	557,254.7	592,695.8	667,180.7	87.8	91.5	93.9
Supplemental Appropriations	-	-	15.9	-	-	0.0
Automatic Appropriations	38,595.5	40,627.9	43,461.3	6.1	6.3	6.1
Continuing Appropriations	23,526.7	14,348.2	-	3.7	2.2	-
Budgetary Adjustments	14,955.7	-	-	2.4	-	-
<b>Total Available Appropriations</b>	<b>634,332.6</b>	<b>647,671.9</b>	<b>710,657.9</b>	<b>100.0</b>	<b>100.0</b>	<b>100.0</b>
LESS: Unused Appropriations	20,849.2	14,348.2	-	3.3	2.2	-
<b>Total Obligations</b>	<b>613,483.4</b>	<b>633,323.7</b>	<b>710,657.9</b>	<b>96.7</b>	<b>97.8</b>	<b>100.0</b>

Source of basic data: NEP 2023

- 2.3 Continuing appropriations are unused appropriations from the previous year that are carried over to the next fiscal year, particularly unreleased appropriations and unobligated releases for Maintenance and Other Operating Expenses (MOOE), Capital Outlay (CO) and Personal Services (PS). The 2022 continuing appropriations of the DepEd amounted to P14.35 billion which is P9.18 billion or 39.0% lower compared with P23.53 billion in 2021.
- 2.4 Budgetary adjustments are transfers made to or from other agencies and Special Purpose Funds (SPFs) within the fiscal year. In 2021, the DepEd's budgetary adjustments reached P14.96 billion accrued from transfers from the Calamity Fund, the Miscellaneous Personnel Benefits Fund (MPBF), the Pension and Gratuity Fund (PGF), and from the unprogrammed appropriation (SHS Voucher Program), and the transfers to the Department's overall savings and to the Department of Public Works and Highways (DPWH) for the construction of school buildings, laboratories, and sanitation facilities under the Basic Education Facilities program.

### III. EXPENDITURE PROGRAM

- 3.1 *Expenditure by Agency.* The 2023 proposed total expenditure program of the DepEd amounts to P710.66 billion which is P77.33 billion or 12.2% higher than the spending level of P633.32 billion in 2022 (*Table 2*). The OSEC practically accounts for the entire budget of DepEd (99.9%) with an allocation of P709.70 billion. The proposed 2023 allocation for the OSEC will increase by P77.93 billion or 12.3% from 2022 which is almost equivalent to the overall growth in the DepEd budget.



**TABLE 2**  
**EXPENDITURE PROGRAM BY AGENCY, 2021-2023**  
**DEPARTMENT OF EDUCATION**

Particulars	Amounts (In Million Pesos)			Share to Total (%)		
	2021	2022	2023	2021	2022	2023
Office of the Secretary	612,445.3	631,771.2	709,702.4	99.83	99.80	99.90
National Book Development Board	96.3	107.6	68.2	0.02	0.02	0.01
National Council for Childrens' Television	28.9	41.0	33.1	0.00	0.01	0.01
National Museum	578.5	698.1	460.3	0.09	0.11	0.06
Philippine High School for the Arts	101.8	106.8	103.7	0.02	0.02	0.01
Early Childhood Care Development Council	232.6	255.6	62.9	0.04	0.04	0.01
National Academy of Sports	-	343.4	227.2	-	0.05	0.03
<b>TOTAL Department</b>	<b>613,483.4</b>	<b>633,323.7</b>	<b>710,657.9</b>	<b>100.00</b>	<b>100.00</b>	<b>100.00</b>

Sources of basic data: BESF 2023

- 3.2 The remaining 0.1% or P1 billion of the DepEd's 2023 proposed expenditure program will be shared by the six attached agencies (NBDB, NCCT, NM, PHSA, ECCDC, and NAS). While the DepEd will have a bigger budget in 2023, the allotments for all attached agencies will decline to a total of P597 million or 38.5% from 2022 levels.
- 3.3. The ECCDC, in particular, will have a budget cut of 75.4% or P192.7 million (from P225.6 million in 2022 to P62.9 million in 2023). The cut is mainly on operations, from P221.0 million in 2022 to a proposed P30.6 million in 2023. The NM will have a budget of P460.3 million in 2023 which is 34.1% lower than the P698.1 million expenditure program in 2022. The NBDB, NAS, and NCCT will have budget cuts of 36.60%, 33.8% and 19.3%, respectively. The PHSA, on the other hand, will have minimal adjustment of 2.9% cut equivalent to P3.1 million.
- 3.4 **Expenditure by Expense Class.** The DepEd's 2022 proposed expenditure program is comprised of P556.28 billion or 78.3% share for PS, with an increase of P42.44 billion or 8.3% from 2022; P136 billion or 19.1% share for MOOE, with an increase of P37.08 billion or 37.5% compared with 2022; and P18.37 billion or 2.6% share for CO with a decrease of P2.20 billion (Table 3). Of the total amount allotted for CO, P5.91 billion or 32% will be released directly to the Department of Public Works and Highways (DPWH) for the construction, replacement and completion of school buildings and technical-vocational laboratories.

**TABLE 3**  
**EXPENDITURE PROGRAM BY GENERAL EXPENSE CLASS, 2021-2023**  
**DEPARTMENT OF EDUCATION**

Particulars	Amounts (In Million Pesos)			Share to Total (%)		
	2021	2022	2023	2021	2022	2023
PS	487,741.7	513,841.7	556,284.9	79.5	81.1	78.3
MOOE	105,423.6	98,911.8	135,998.2	17.2	15.6	19.1
CO	20,318.0	20,570.2	18,374.8	3.3	3.2	2.6
Fin Ex	-	-	-	-	-	-
<b>TOTAL Department</b>	<b>613,483.4</b>	<b>633,323.7</b>	<b>710,657.9</b>	<b>100.0</b>	<b>100.0</b>	<b>100.0</b>

Sources of basic data: BESF 2023

- 3.5 **Staffing Summary.** The total authorized positions in the DepEd and its attached agencies in 2021 was 1,002,164. Additional 3,621 items were authorized in 2022 bringing the total to 1,005,785. The additional items cover 3,540 teaching and non-teaching positions for DepEd -OSEC and 81 positions for the newly created NAS (Table 4).
- 3.6 Unfilled positions in 2021 totalled 46,450. This increased to 47,298 in 2022 representing 4.7% of the total authorized positions which comprised mainly of 47,034 teaching and non-teaching positions in DepEd-OSEC, 204 in NM, 77 in NAS, 43 in NBDB, 11 in PHSA, and 4 and 2 in NCCT and ECCDC, respectively.
- 3.7 Notwithstanding the small proportion of 4.7% of the total number of unfilled positions in the DepEd relative to total authorized positions, the number of vacancies nonetheless remains significantly huge and must be explained by the DepEd. The long-standing issues and challenges on teacher shortage and big class sizes have become even more pronounced with the new normal learning set-up where adequate space for social distancing must be maintained in face-to-face classes. Hence, hiring and engaging of more teaching staff should be a priority.

**TABLE 4**  
**NUMBER OF AUTHORIZED AND UNFILLED POSITIONS BY AGENCY, 2020-2023**  
**DEPARTMENT OF EDUCATION**

Agency	Authorized Positions				Unfilled Position			
	2020	2021	2022	2023	2020	2021	2022	2023
OSEC	986,819	1,001,452	1,004,992	1,004,992	46,337	46,179	47,034	47,034
NBDB	79	79	79	79	44	43	43	43
NCCT	13	20	20	20	1	5	4	4
NM	568	545	545	545	204	198	204	204
PHSA	65	65	65	65	11	23	11	11
ECCDC	3	3	3	3	2	2	2	2
NAS	-	-	81	81	-	-	77	77
<b>TOTAL</b>	<b>987,547</b>	<b>1,002,164</b>	<b>1,005,785</b>	<b>1,005,785</b>	<b>46,599</b>	<b>46,450</b>	<b>47,298</b>	<b>47,298</b>

Source: Staffing Summary 2023

3.8 **Regional Allocation.** The P710.66 billion proposed 2023 budget of DepEd is allocated by regions which includes the combined allotment for Nationwide and Central Office operations amounting to P28.13 billion or 4.0% of the total proposed budget (*Table 5*). *Nationwide* refers to allocations for programs with nationwide application but the regional distribution of the funds is not yet determined at the time of budget preparation (e.g., Education Service Contracting Vouchers). The downloading of said funds is done during budget execution resulting in the distribution being reflected only by the end of the fiscal year. Funds for *Central Office* pertains to allocation being managed by the Head Office of department/agencies for their respective units. Relative to previous years' budget, the 2023 combined budget (Nationwide and Central Office) reflects a decrease of 33.4% from 2022 and even lower by 48.9% compared with the actual expenditures in 2021. Notably, Nationwide allocation is reversely higher than the Central Office in 2022 and 2023 compared with the 2021 allocations.

**TABLE 5**  
**REGIONAL DISTRIBUTION OF THE DEPED BUDGET, 2021-2023**  
**(AMOUNTS IN MILLION PESOS)**

Region	2021		2022		2023	
	Amount	Share (%)	Amount	Share (%)	Amount	Share (%)
Nationwide	182.7	0.0	39,640.3	6.3	24,214.7	3.4
Central Office	54,889.0	8.9	2,567.5	0.4	3,911.4	0.6
NCR	50,781.8	8.3	51,511.0	8.1	61,903.5	8.7
CAR	13,508.6	2.2	14,061.0	2.2	16,252.9	2.3
Region 1	33,333.3	5.4	34,570.8	5.5	39,055.0	5.5
Region 2	24,183.8	3.9	24,910.7	3.9	27,876.5	3.9
Region 3	57,684.0	9.4	61,148.8	9.7	70,639.5	9.9
Region 4A	65,671.5	10.7	69,724.1	11.0	83,457.8	11.7
Region 4B	22,374.7	3.6	22,928.1	3.6	25,816.5	3.6
Region 5	43,974.7	7.2	43,984.6	6.9	49,647.7	7.0
Region 6	47,292.4	7.7	49,580.1	7.8	55,639.9	7.8
Region 7	44,145.0	7.2	47,406.3	7.5	55,130.4	7.8
Region 8	34,819.7	5.7	37,082.0	5.9	42,220.6	5.9
Region 9	24,244.9	4.0	26,169.9	4.1	29,829.5	4.2
Region 10	26,495.9	4.3	29,878.3	4.7	34,227.1	4.8
Region 11	26,484.1	4.3	29,549.5	4.7	34,734.2	4.9
Region 12	24,119.2	3.9	26,358.9	4.2	30,235.6	4.3
CARAGA	19,297.9	3.1	21,408.0	3.4	23,786.7	3.3
BARMM	-	-	843.6	0.1	2,078.3	0.3
<b>TOTAL</b>	<b>613,483.4</b>	<b>100.0</b>	<b>633,323.7</b>	<b>100.0</b>	<b>710,657.9</b>	<b>100.0</b>

Source of basic data: BESF 2023

3.9 Regional allocations across all 17 regions will increase in 2023. The regions with highest funding allocations include: a) Region IV-A or CALABARZON, which is allotted the highest budget of P83.46 billion, accounting for 11.7% of the total DepEd's budget. This also reflects a growth rate of 19.7% or roughly P13.73 billion from 2022; b) Region III or

Central Luzon is allotted P70.64 billion or 9.9% share in 2023 which is 15.5% or P9.49 billion higher than in 2022; and c) The National Capital Region (NCR) gets P61.90 billion or 8.7% of the total budget for 2023, reflecting an increase of 20.2% or 10.39 billion from 2022.

- 3.10 The regions with the least share of the allotments are: a) Region IV-B (MIMAROPA) gets P25.82 billion with an increase of P2.89 billion; b) Region XIII (CARAGA) will have P23.79 billion reflecting an increase of P2.38 billion from the previous year; c) The Cordillera Autonomous Region (CAR) gets P16.25 billion which is higher by P2.19 billion than the 2022 allocation; and: d) The Bangsamoro Autonomous Region for Muslim Mindanao (BARMM) with P2.08 billion or 0.3% of the total DepEd budget. The 2023 budget for BARMM reflects an increase of P1.23 billion or 146.4% compared with the P843.6 million allotment in 2022. The DepEd's budget for BARMM is intended for education programs, specifically for school building facilities, as authorized under Article VI, Sec. 13 of R.A. 11054 or the Organic Law for the BARMM.

#### **IV. SPENDING FOR COVID-19 INITIATIVES**

- 4.1. In the last two school years of the COVID-19 health crisis, the *Basic Education-Learning Continuity Plan* (BE-LCP) was DepEd's major response and commitment in ensuring that learning continues despite the absence of face-to-face classes. Education must continue even with the implementation of health protocols and other guidelines prescribed and set by the Department of Health (DOH) and the World Health Organization (WHO).
- 4.2 The BE-LCP has three important components: self-learning materials, preparation of human resources, and minimum health standards. It adopts multiple learning delivery modalities (e.g., blended learning, distance learning, and homeschooling) and ensures effective delivery of quality education to the learners with the use of self-learning modules (SLMs) in digital and printed form, radio, television, and the internet.
- 4.3 Under *Bayaniban to Heal as One Act* (R.A. 11469 or *Bayaniban I*) and *Bayaniban to Recover as One Act* (R.A. 11494 or *Bayaniban II*), a total of P16.41 billion was allotted for release to the DepEd primarily for the implementation of BE-LCP (*Table 6*). Of this amount, P15.37 billion has been obligated with P14.55 billion or 94.7% disbursed as of 31 December 2021, thereby resulting in a balance of P1.04 billion unobligated allotment (P506.8 million from *Bayaniban I* and P529.9 million from *Bayaniban II*). The total obligated undisbursed allocation amounted to P822.2 million as of the reckoning date.

**TABLE 6**  
**STATUS OF COVID-19 RELEASES TO DEPED, AS OF 31 DECEMBER 2021**  
**(AMOUNTS IN MILLION PESOS)**

Program/Purpose	Allotment Released	Obligations	Disbursements	Unobligated Allotment
<b>I. BAYANIHAN I</b>	<b>10,911.1</b>	<b>10,404.3</b>	<b>9,845.0</b>	<b>506.8</b>
<b>FY 2020 GAA R.A. No. 11469</b>				
To cover funding requirements for the implementation of the Basic Education-Learning Continuity Plan	8,134.4	7,670.2 <sup>a</sup>	7,139.2 <sup>a</sup>	464.2
<b>FY 2019 Continuing Appropriations</b>				
To cover funding requirements for the implementation of the Basic Education-Learning Continuity Plan	2,776.7	2,734.1 <sup>a</sup>	2,705.7 <sup>a</sup>	42.6
<b>II. BAYANIHAN II</b>	<b>5,494.1</b>	<b>4,964.2</b>	<b>4,701.4</b>	<b>529.9</b>
<b>FY 2020 GAA, RA No. 11465 - Current Appropriations (Regular Agency Fund)</b>				
To cover funding requirements for the implementation of the Basic Education-Learning Continuity Plan	703.7	606.7 <sup>b</sup>	500.8 <sup>b</sup>	97.1
<b>FY 2019 Continuing Appropriations -Regular Agency Fund-FLR</b>				
To cover funding requirements for the implementation of the Basic Education-Learning Continuity Plan	490.3	477.8 <sup>b</sup>	459.2 <sup>b</sup>	12.5
<b>Special Appropriations RA No. 11494</b>				
To cover the funding requirements for the implementation of Digital Education, Information Technology and Digital Infrastructures and Alternative Learning Module,; Basic Education Learning Continuity Plan; and provision of subsidies and allowances to qualified students	4,300.0	3,879.7 <sup>b</sup>	3,741.5 <sup>b</sup>	420.3
<b>TOTAL</b>	<b>16,405.2</b>	<b>15,368.5</b>	<b>14,546.3</b>	<b>1,036.7</b>

a/ as of 30 June 2021, b/ as of 31 December 2021

Source: Status of COVID 19 Releases, as of 31 December 2021/dbm.gov.ph

## V. NEW APPROPRIATIONS

- 5.1 **By Agency and Cost Structure.** The proposed new appropriations of DepEd for 2023 will amount to P667.18 billion (Table 7). The OSEC will receive 99.9% of the total new appropriations amounting to P666.25 billion. Among the attached agencies, NM will have the largest funding of P444.4 million followed by NAS with P226.6 million and PHSA with P100.9 million. The other three attached agencies will be allotted with less than P100 million for a combined amount of P156.1 million.
- 5.2 In terms of cost structure, the biggest portion of DepEd's new appropriations will be allotted for Operations amounting to P642.56 billion or 96.3% intended for programs directly relating to the core mandate of the agency. General Administration and Support (GAS) will receive the second biggest allotment of P21.14 billion (3.2%) for the administrative management and operational support to agency operations. Finally, Support to Operations

(STO) will be allotted P3.48 billion (0.5%) for expenses on staff or technical support needed for operations that do not directly produce goods or services to the agency's client group.

**TABLE 7**  
**NEW APPROPRIATIONS BY AGENCY AND COST STRUCTURE, FY 2023**  
**DEPARTMENT OF EDUCATION**

Agency	Amounts (In Million Pesos)				Share to Total Agency (%)			
	GAS	STO	Operations	Total Agency	GAS	STO	Operations	Total Agency
OSEC	20,670.3	3,474.8	642,107.6	666,252.7	3.1	0.5	96.4	100.0
NBDB	28.8	-	35.8	64.6	44.6	0.0	55.4	100.0
NCCT	16.6	-	15.5	32.1	51.7	0.0	48.3	100.0
NM	202.7	1.9	239.8	444.4	45.6	0.4	54.0	100.0
PHSA	53.0	-	47.9	100.9	52.5	0.0	47.5	100.0
ECCDC	32.3	-	27.1	59.4	54.4	0.0	45.6	100.0
NAS	138.4	-	88.1	226.6	61.1	0.0	38.9	100.0
<b>TOTAL</b>	<b>21,142.1</b>	<b>3,476.7</b>	<b>642,561.9</b>	<b>667,180.7</b>	<b>3.2</b>	<b>0.5</b>	<b>96.3</b>	<b>100.0</b>

Source of basic data: NEP 2023

5.3 **Summary of Programs.** Practically, 99.9% of the DepEd's 2023 budget for operations will be lodged with the OSEC. A total of P642.11 billion is allocated for the implementation of five (5) major programs, namely: a) Education Policy Development Program; b) Basic Education Inputs Program; c) Inclusive Education Program; d) Support to Schools and Learners Program; and e) Education Human Resource Development Program. Table 8 presents the allocations for the different programs of DepEd-OSEC with select subprograms.

**TABLE 8-A**  
**SUMMARY OF PROGRAMS FOR 2021-2023**  
**DEPARTMENT OF EDUCATION**

Implementing Agency/Program	Amount (In Million Pesos)			% Share to Total Program			Growth Rates 22-23 (%)
	2021	2022	2023	2021	2022	2023	
<b>Support to Schools and Learners Program (OSEC)</b>	<b>471,232.9</b>	<b>501,499.3</b>	<b>560,189.4</b>	<b>87.5</b>	<b>87.5</b>	<b>87.2</b>	<b>11.7</b>
<i>Of which:</i>							
<i>School-Based Feeding Program</i>	6,044.8	3,321.7	5,688.6	1.1	0.6	0.9	71.3
<i>Operation of Schools - Elementary (Kinder to Grade 6)</i>	252,954.3	269,855.8	284,547.3	47.0	47.1	44.3	5.4
<i>Operation of Schools - Junior HS (Grade 7 to Grade 10)</i>	139,160.6	150,058.7	160,881.4	25.8	26.2	25.1	7.2
<i>Operation of Schools - Senior HS (Grade 11 to Grade 12)</i>	37,485.8	41,195.1	45,414.1	7.0	7.2	7.1	10.2
<i>Government Assistance and Subsidies - Education Service Contracting (ESC) Program for Private Junior High School</i>	11,236.1	10,673.6	12,498.0	2.1	1.9	1.9	17.1
<i>Government Assistance and Subsidies - Voucher Program for Private Senior High School</i>	13,692.2	16,534.2	39,326.8	2.5	2.9	6.1	137.9
<i>Joint Delivery Voucher for Senior High School Technical Vocational Livelihood Specializations</i>	1,160.0	1,160.0	1,380.5	0.2	0.2	0.2	19.0

**TABLE 8-B**  
**SUMMARY OF PROGRAMS FOR 2021-2023**  
**DEPARTMENT OF EDUCATION**

Implementing Agency/Program	Amount (In Million Pesos)			% Share to Total Program			Growth Rates 22-23 (%)
	2021	2022	2023	2021	2022	2023	
<b>Basic Education Inputs Program (OSEC)</b>	<b>40,176.1</b>	<b>45,208.2</b>	<b>50,454.3</b>	<b>7.5</b>	<b>7.9</b>	<b>7.9</b>	<b>11.6</b>
<i>Of which:</i>							
<i>New School Personnel Positions</i>	15,321.7	20,057.2	23,916.8	2.8	3.5	3.7	19.2
<i>Learning Tools and Equipment</i>	2,719.3	2,724.2	2,802.7	0.5	0.5	0.4	2.9
<i>Textbooks and Other Instructional Materials</i>	963.3	963.3	998.5	0.2	0.2	0.2	3.7
<i>Computerization Program</i>	5,996.1	11,760.9	8,901.9	1.1	2.1	1.4	(24.3)
<i>Basic Education Facilities</i>	11,146.5	5,949.4	9,802.3	2.1	1.0	1.5	64.8
<i>Last Mile Schools</i>	1,500.0	1,510.0	1,510.0	0.3	0.3	0.2	-
<b>Inclusive Education Program (OSEC)</b>	<b>17,473.1</b>	<b>16,299.3</b>	<b>20,431.1</b>	<b>3.2</b>	<b>2.8</b>	<b>3.2</b>	<b>25.3</b>
<i>Of which:</i>							
<i>Multiple-grade Education Program</i>	22.3	22.3	23.1	0.0	0.0	0.0	3.7
<i>Indigenous Peoples Education Program</i>	159.1	144.3	53.4	0.0	0.0	0.0	(63.0)
<i>Flexible Learning Options (ADM/ALS/EiE)</i>	16,615.7	15,215.7	19,995.2	3.1	2.7	3.1	31.4
<i>Special Education Program</i>	329.2	560.2	-	0.1	0.1	-	(100.0)
<i>Madrasah Education Program</i>	346.8	356.8	359.5	0.1	0.1	0.1	0.7
<b>Education Policy Development Program (OSEC)</b>	<b>7,928.3</b>	<b>8,214.1</b>	<b>8,428.0</b>	<b>1.5</b>	<b>1.4</b>	<b>1.3</b>	<b>2.6</b>
<b>Education Human Resource Development Program (OSEC)</b>	<b>1,908.0</b>	<b>1,904.7</b>	<b>2,604.8</b>	<b>0.4</b>	<b>0.3</b>	<b>0.4</b>	<b>36.8</b>
<b>Total Operations, OSEC</b>	<b>538,718.3</b>	<b>573,125.6</b>	<b>642,107.6</b>	<b>100.0</b>	<b>100.0</b>	<b>100.0</b>	<b>12.0</b>

Source: GAA 2021-2022 and NEP 2023

- 5.4 The *Support to Schools and Learners Program (SSLP)* takes 87.2% or P560.19 billion of the OSEC's Operations budget for 2023. This is 11.7% or P58.69 billion higher compared with the 2022 budget. Under SSLP, funding of *School-based Feeding Program (SBFP)* will have an increase of 71.3% or additional P2.37 billion, from P3.32 billion in 2022 to P5.69 billion in 2023. This increase in funding will benefit more learners in time for the nationwide school reopening. In the previous year and while schools were closed, DepEd implemented a modified SBFP in coordination with Local Government Units (LGUs) for School Year (SY) 2020-2021 wherein priority was given to incoming kindergarten learners and Grades 1 to 6 learners who were "wasted and severely wasted". As a holistic approach, the government allocates separate budget to the Department of Social Welfare and Development (DSWD) for its *Supplementary Feeding Program* for children enrolled in daycare centers and to the DOH's *Infant and Young Child Feeding Program* for children under three years old.
- 5.5 The *Government Assistance and Subsidies-Voucher Program for Private Senior High School (SHS VP)* will have 137.9% increase in budget allotment, from P16.53 billion in 2022 to P39.33 billion in 2023. The substantial increase in budget will expand access to quality education for Senior High Schools by assisting private education institutions with government subsidies.

- 5.6 The *Basic Education Inputs Program* (BEIP) will have 7.9% share of the DepEd's 2023 budget representing P50.45 billion. All subprograms will have corresponding increase in funding except for the DepEd Computerization Program (DCP) which has a budget cut of 24.3% or P2.86 billion (from P11.76 billion in 2022 to P8.90 billion in 2023). The DCP aims to provide public schools with appropriate technologies that would enhance the teaching-learning process and meet the challenges of the 21st century.
- 5.7 The *Basic Education Facilities Program* (BEFP) is allotted with P9.8 billion which is 64.8% higher than the previous year's allotment of P5.95 billion. The proposed 2023 budget for the program includes P5.91 billion to be released directly to the DPWH for the construction, replacement, and completion of kindergarten, elementary and secondary school buildings and technical vocational laboratories. The remaining P3.89 billion will be for the repair, renovation and improvements of school facilities, modernization of electrical systems, acquisition of furniture and fixtures, and other engineering and administrative costs. Relatedly, the School Building Program in the 1<sup>st</sup> to 4<sup>th</sup> Class municipalities/cities was the only DepEd program identified by the DBM for possible devolution to LGUs pursuant to the Supreme Court Ruling on the *Mandanas-Garcia case*. Pending the finalization and approval of the DepEd's Devolution Transition Plan (DTP), funding for school buildings may still be subject to realignment in the 2023 allocation.
- 5.8 The *Last Mile Schools Program* retains its allocation at P1.51 billion which shall be released directly to DepEd. It is intended for the construction, replacement, and completion of school buildings, technical-vocational laboratories, and water and sanitation facilities of last mile schools or those schools with less than four classrooms and less than five teachers with population of less than 100 learners, located in geographically isolated and disadvantaged and conflict-affected areas (GIDCA). Proposed budget for other subprograms such as *Learning Tools and Equipment*, and *Textbooks and other Instructional Materials* will increase by 2.9% and 3.7%, respectively.
- 5.9 A total of P20.43 billion is allotted for the *Inclusive Education Program* for FY 2023. It is 25.3% higher compared with the 2022 spending level of P16.30 billion. While the budget allotment for this program has increased by P4.13 billion, the budget for the *Indigenous Peoples Education Program* (IPED) is cut by 63.0% (from P144.3 million in 2022 to P53.4 million in 2023). The IPED is DepEd's program on promoting the right of indigenous communities and indigenous learners to an education that is responsive to their needs. It serves more than 2.5 million IP learners in 42,176 public schools. The DepEd even reported that despite the extreme impact of the pandemic to IP communities, the enrollment of IP learners in public schools for School Year 2020-2021 reached 98.49% of previous school year.
- 5.10 Notably, no allocation was given to the *Special Education Program* (SPED) in the proposed 2023 budget. In 2021 and 2022, the program was allocated with P392.2 million and P560.2 million, respectively, with P100.0 million special provision of learning resources for learners with disabilities under the Textbooks and Other Learning Materials Program.. The SPED is DepEd's program for learners with special needs and non-funding of the same runs counter to the country's goal of achieving inclusive education. Incidentally, Republic Act



11650 or the “Inclusive Education Act of 2022” was enacted into law in March 2022 in which the DepEd is the lead implementing agency. The law ensures that all learners will be given equal learning opportunities regardless of their background or abilities, including those with special needs and learners with disabilities.

- 5.11 Allocation for *Flexible Learning Options* - which include Alternative Delivery Modes (ADM), Education in Emergencies (EiE), and Alternative Learning System (ALS) - will increase by 31.4% (from P15.22 billion in 2022 to P20.0 billion in 2023). The ADM and EiE involve the printing and delivery of Self Learning Modules (SLMs) which learners used as primary learning materials for distance learning during the height of the pandemic and while schools were closed. This school year, however, with the DepEd’s policy pronouncements of 100% face to face classes by November 2022, the printing and delivery of SLMs is expected to be substantially reduced, if not totally discontinued.
- 5.12 *Education Policy Development Program* is allotted with P8.43 billion which is higher by P213.9 million (2.6%) relative to the 2022 budget of P8.21 billion. On the other hand, the 2023 budget for the *Education Human Resource Development Program* is allocated with P2.60 billion, one of the smallest shares in the agency’s total budget for operations (0.4%). Compared with the previous year’s allocation of P1.90 billion, the 2023 budget for this program reflects an increase of 36.8%.

## VI. PERFORMANCE REVIEW

- 6.1 **Budget Utilization.** Table 9 presents the obligations-appropriations ratio (OAR) for DepEd and its attached agencies covering the period 2019 to 2021. This is a measure of the efficiency of agencies in utilizing their appropriations. The overall OAR of the DepEd in 2021 is 96.7%, reflecting improvement in budget utilization from 94.0% in 2019 and 95.0% in 2020.
- 6.2 The OSEC, NBDB, NCCT and NM all recorded improvements in OAR in 2021 compared with 2019 and 2020 budget utilization performance. The PHSA barely sustained its 79.7% OAR in 2020 to 79.5 % in 2021 and which are much lower than its 2019 OAR of 84%. The ECCDC, on the other hand, reflected an improvement of 14.7 percentage points with its 2021 OAR of 47.6% compared with 2020 OAR of 32.9%. However, ECCDC’s budget utilization remains significantly low compared with its 2019 OAR of 86.0%.
- 6.3 In terms of unused appropriations, DepEd was able to continuously improve its level of spending and recorded declining unused appropriations in the last three years. The unused appropriations in 2021 was nonetheless still huge at P20.85 billion, representing roughly 3.3% of DepEd’s total budget. This improvement is primarily carried by OSEC where 99.9% of DepEd’s total budget is lodged. In the case of ECCDC, the OAR is still low at 47.6%, equivalent to unused appropriations of P256 million in 2021. The low budget utilization of ECCDC may undermine the important mandate and programs of the agency

to promote and strengthen the early childhood care and development as an investment in the future and a strategy to ensure lifelong learning (SER 2021).

**TABLE 9**  
**OBLIGATIONS-APPROPRIATIONS RATIO**  
**AND UNUSED APPROPRIATIONS, 2019-2021**  
**DEPARTMENT OF EDUCATION**

Particulars	Obligation-Appropriations Ratio (%)			Unused Appropriations (In Million Pesos)		
	2019	2020	2021	2019	2020	2021
Office of the Secretary	94.1	95.1	96.8	32,503.2	27,617.6	20,488.7
NBDB	76.1	63.6	84.2	17.8	20.8	18.1
NCCT	74.9	73.3	99.3	4.5	4.5	0.2
NM	77.1	82.4	90.6	176.2	92.7	59.9
PHSA	84.0	79.7	79.5	20.6	21.2	26.2
ECCDC	86.0	32.9	47.6	75.0	329.9	256.0
NAS	-	-	-	-	-	-
<b>TOTAL Department</b>	<b>94.0</b>	<b>95.0</b>	<b>96.7</b>	<b>32,797.3</b>	<b>28,086.7</b>	<b>20,849.2</b>

Sources of basic data: NEP 2021-2023

6.4 **Disbursement Rate by Agency.** Disbursement rate or the ratio of disbursements to appropriations also provides budget utilization information. Total DepEd posted an increase in disbursement rate to 90.2% in 2021 from 87.7% in 2020 (Table 10). Among attached agencies, NM and PHSA recorded a decrease in disbursement rates to 66.8% and 69.6% in 2021 from 71.4% and 73.9% in 2020, respectively. The NCCT has the highest disbursement rate of 99.3% in 2021 while the ECCDC registered the lowest disbursement rate in the last two years (26.9% in 2020 and 35.5% in 2021).

**TABLE 10**  
**DISBURSEMENT RATE BY AGENCY, 2020-2021**  
**(AMOUNTS IN MILLION PESOS)**  
**DEPARTMENT OF EDUCATION**

Particulars	2020			2021		
	Appropriations	Disbursements	Disbursement Rate (%) <sup>a/</sup>	Appropriations	Disbursements	Disbursement Rate (%) <sup>a/</sup>
OSEC	560,563.0	492,037.7	87.8	632,934.0	571,513.9	90.3
NBDB	57.1	35.4	62.0	114.4	88.3	77.2
NCCT	16.9	12.4	73.3	29.1	28.9	99.3
NM	527.1	376.1	71.4	638.4	426.7	66.8
PHSA	104.2	77.1	73.9	128.0	89.1	69.6
ECCDC	491.8	132.3	26.9	488.6	173.5	35.5
<b>Total Dept</b>	<b>561,760.1</b>	<b>492,671.0</b>	<b>87.7</b>	<b>634,332.6</b>	<b>572,320.4</b>	<b>90.2</b>

a/ Disbursement rate – ratio of disbursements to appropriations; 2021 SAAODB is 4Q-Preliminary  
Source: SAAODB 2020-2021, DBM

6.5 **Budget Utilization by Major Program.** Presented in Table 11 is DepEd-OSEC's 2021 budget utilization performance by major program. The *Support to Schools and Learners Program*

which is the biggest funded program of the Department posted the highest obligation (99.2%) and disbursement (96.4%) rates. High budget utilization of this single major program reflects the high overall disbursement performance of the OSEC. Some subprograms, however, registered very low disbursement rates but which may have not affected the DepEd's overall program utilization performance due to rather small shares in appropriations: a) Government assistance and subsidies-Voucher Program for Non-DepEd Public High Schools (21.4%); and b) Joint Delivery Voucher for Senior High School Technical Vocational Livelihood Specialization (0.4%).

**TABLE II-A**  
**BUDGET UTILIZATION BY MAJOR PROGRAM, 2021**  
**(AMOUNTS IN MILLION PESOS)**  
**DEPARTMENT OF EDUCATION**

Program	Appropriations	Obligations	Disbursements	Obligation Rate (%) <sup>a/</sup>	Disbursement Rate (%) <sup>b/</sup>
<b>Support to Schools and Learners Program (OSEC)</b>	<b>512,734.9</b>	<b>508,573.3</b>	<b>494,158.1</b>	<b>99.2</b>	<b>96.4</b>
<i>Of which</i>					
<i>School-Based Feeding Program</i>	7,686.9	7,094.4	4,539.2	92.3	59.1
<i>Operation of Schools - Elementary (Kinder to Grade 6)</i>	274,681.7	273,837.9	268,974.9	99.7	97.9
<i>Operation of Schools - Junior HS (Grade 7 to Grade 10)</i>	150,202.8	149,299.6	148,066.7	99.4	98.6
<i>Operation of Schools - Senior HS (Grade 11 to Grade 12)</i>	40,681.8	40,243.2	39,433.9	98.9	96.9
<i>Government Assistance and Subsidies - Education Service Contracting (ESC) Program for Private Junior High School</i>	11,236.1	10,673.6	8,459.2	95.0	75.3
<i>Government Assistance and Subsidies - Voucher Program for Private Senior High School</i>	17,392.1	17,391.5	16,877.0	100.0	97.0
<i>Government Assistance and Subsidies - Voucher Program for Non-DepEd Public High School</i>	742.5	742.5	158.7	100.0	21.4
<i>Joint Delivery Voucher for Senior High School Technical Vocational Livelihood Specializations</i>	1,161.4	1,159.9	4.4	99.9	0.4
<b>Basic Education Inputs Program (OSEC)</b>	<b>42,891.5</b>	<b>34,271.0</b>	<b>22,695.7</b>	<b>79.9</b>	<b>52.9</b>
<i>Of which</i>					
<i>New School Personnel Positions</i>	15,342.7	14,611.1	13,622.0	95.2	88.8
<i>Learning Tools and Equipment</i>	2,719.3	1,645.1	34.2	60.5	1.3
<i>Textbooks and Other Instructional Materials</i>	1,519.1	394.1	251.2	25.9	16.5
<i>Computerization Program</i>	7,394.9	5,654.6	1,692.3	76.5	22.9
<i>Basic Education Facilities</i>	9,467.4	7,483.3	5,103.3	79.0	53.9
<b>Education Policy Development Program (OSEC)</b>	<b>8,892.7</b>	<b>7,867.2</b>	<b>8,138.7</b>	<b>88.5</b>	<b>91.5</b>

**TABLE II-B**  
**BUDGET UTILIZATION BY MAJOR PROGRAM, 2021**  
**(AMOUNTS IN MILLION PESOS)**  
**DEPARTMENT OF EDUCATION**

Program	Appropriations	Obligations	Disbursements	Obligation Rate (%) <sup>a/</sup>	Disbursement Rate (%) <sup>b/</sup>
<b>Inclusive Education Program (OSEC)</b>	<b>17,739.0</b>	<b>15,174.8</b>	<b>9,207.8</b>	<b>85.5</b>	<b>51.9</b>
<i>Of which</i>					
<i>Multiple-grade Education Program</i>	22.8	13.1	4.1	57.5	17.9
<i>Indigenous Peoples Education Program</i>	180.4	157.7	111.2	87.4	61.7
<i>Flexible Learning Options (ADM/ALS/EiE)</i>	16,807.8	14,433.0	8,627.9	85.9	51.3
<i>Madrasah Education Program</i>	398.8	283.1	237.6	70.9	59.6
<b>Education Human Resource Development Program (OSEC)</b>	<b>3,175.2</b>	<b>854.8</b>	<b>423.9</b>	<b>26.9</b>	<b>13.4</b>

*a/ Obligation rate – ratio of obligations to appropriations;*  
*b/ Disbursement rate – ratio of disbursements to appropriations*  
Source: SAAODB 2021 (FAR No. 1 in Transparency Seal)

6.6 The *Basic Education Inputs Program* reflected an obligation rate of 79.9% and a low disbursement rate of 52.9%. Of subprograms, only the *New School Personnel Positions Program* posted high obligation and disbursement rates of 95.2% and 88.8%, respectively. Subprograms on *Learning Tools and Equipment* and *Computerization Program* recorded very low disbursement rates (1.3% and 22.9%, respectively). The *Textbooks and Other Instructional Materials Program* also registered low disbursement rate of 16.5% and which may be subject to reconciliation with the observation of the Commission on Audit (COA) on its 2021 Annual Audit Report that DepEd registered zero percent physical accomplishment in the procurement of manuscripts and textbook/learning materials under said program for CY 2021 (See Part VII – COA Findings and Recommendations).

6.7 Budget utilization performance on *Flexible Learning Options* - under the *Inclusive Education Program* – posted 85.9% obligation rate and 51.3% disbursement rate. Program on *Human Resource Development* reflected a low obligation rate of 26.9% and a disbursement rate of 13.4%. These programs are critical components of BE-LCP – the DepEd’s COVID-19 Response program.

6.8 **Performance Indicators.** Presented in Table 12 is DepEd OSEC’s performance indicator for each major program and selected subprograms. OSEC’s largest program, the *Support to Schools and Learners Program* was able to maintain high level of achievement for the retention rate but fell short in completion rates for both elementary and secondary levels (79% actual vs 90% target and 69% actual vs 77% target, respectively). Its 2023 targets on completion rate were adjusted to the 2021 actual accomplishments.

6.9 On the National Achievement Test (NAT), the DepEd was not able to conduct such assessment in SY 2020-2021 due to quarantine protocols implemented by the government at the height of pandemic. For SY 20221-2022, the DepEd administered a sampling of rapid assessment of Early Language, Literacy and Numeracy Assessment (ELLNA), and NAT for Grade 6 and Grade 12. The test administration serves as a rapid assessment to

identify learning gaps and to design appropriate interventions, as well as in preparation for establishing a new system assessment baseline in 2024.

6.10 In 2021, the number of learners benefiting from the School-based feeding Program exceeded its target by roughly 1,000,000 or 56.7% (from 1,775,349 to 2,781,500 learners). Despite the very high accomplishment in 2021, the 2023 target even declined compared to 2021 and 2022 targets.

6.11 Under the *Basic Education Inputs Program*, only 191 classrooms were constructed/ completed) or 18.5% of the 1,035 target in 2021 and out of the 4,279,000 textbooks and instructions learning materials targeted for procurement, printing and distribution, only 2,468 or 0.06% was realized. On the other hand, DepEd-OSEC was able to fill up more than 50% of its newly created positions in 2021 (5,581 of the 10,000 positions). In terms of equipment/tools procured for distribution, ICT packages bought exceeded the target by 53.6% while those for science and math and technical and vocational livelihood fell short of the targets.

**TABLE 12-A**  
**PERFORMANCE INDICATORS OF MAJOR PROGRAMS, 2021-2023**  
**DEPARTMENT OF EDUCATION**

Program	2021		2022 Target	2023 Target
	Target	Actual		
<b>Education Policy Development</b>				
Outcome Indicators				
<i>Percentage of completed education researches used for policy development</i>	30%	100% (270/270)	100% (560)	100% (560)
<i>Percentage of satisfactory feedback from clients on issued policies</i>	78%	76%	78%	78%
Output Indicators				
<i>Number of policies formulated, reviewed, &amp; issued</i>	30	60	52	52
<i>Number of education researches completed</i>	320	270	560	560
<i>Number of proposed policies reviewed</i>	70	85	95	85
<b>Basic Education Inputs Program</b>				
Outcome Indicators				
<i>Percentage of public schools meeting the standard ratio for teachers</i>				
Elementary	97% (35,923) SY2021-2022	97%(35,548/36,647) SY2021-2022	99% (36,641) SY2022-2023	99% (36,371) SY2023-2024
Junior High School	83% (7,504) SY2021-2022	89% (7,548/8,481) SY2021-2022	87% (8,115) SY2022-2023	88% (7,799) SY2023-2024
Senior High School	84% (5,778) SY2021-2022	85% (5,399/6,352) SY2021-2022	86.6% (6,012) SY2022-2023	91% (6,034) SY2023-2024
<i>Percentage of public schools meeting the standard ratio for classrooms</i>				
Grades 1-10	89% (41,799)	86% (41,324/47,927)	89% (941,779)	79% (39,071)
Senior High School	18% (1,277)	61% (4,312/7,013)	18% (1,277)	62% (4,633)

**TABLE 12-B**  
**PERFORMANCE INDICATORS OF MAJOR PROGRAMS, 2021-2023**  
**DEPARTMENT OF EDUCATION**

Program	2021		2022 Target	2023 Target
	Target	Actual		
<i>Percentage of public schools with Information and Communications Technology (ICT) package</i>				
Elementary	100% schools with electricity (36,912)	100% schools with electricity (36,868)	99% schools with electricity (38,741)	100% schools with electricity (36,868)
Secondary	100% schools with electricity (8,730)	100% schools with electricity (8,730)	99% schools with electricity (8,773)	100% schools with electricity (8,730)
Senior High School	100% schools with electricity (8,730)	100% schools with electricity (6,326)	99% schools with electricity (6,683)	100% schools with electricity (6,326)
<b>Output Indicators</b>				
<i>Number of new classrooms constructed</i>	1,035	191	1,168	2,379
<i>Number of new classrooms on-going construction</i>	4,139	2,711	No available data	No available data
<i>Number of textbooks and instructional /learning materials procured for printing and delivery</i>	4,279,000	2,468	6,732,385	4,628,245
<i>Number of equipment/tools procured for distribution:</i>				
Science and Math	7,730,038 pcs.	5,587,669 pcs.	5,171,883 pcs.	11,016,797 pcs.
Technical and Vocational Livelihood	215,490 pcs.	13,802 pcs.	175,209 pcs.	427,438 pcs.
ICT	37,221 packages	57,173 packages	45,669 packages	83,090 packages
<i>Number of newly-created teaching positions filled up</i>	10,000	5,581	10,000	10,000
<b>Inclusive Education Program</b>				
<b>Outcome Indicators</b>				
<i>Percentage of learners enrolled in:</i>				
SPED (public)	2.01% (450,000)	0.49% (137,828)	1.33% (324,791)	0.48% (137,828)
ALIVE (public and private)	0.76% (170,000)	0.64% (180,423)	0.40% (198,541)	0.63% (180,423)
IPED (public)	0.58% (129,000)	0.46% (129,100)	0.53% (129,000)	0.45% (129,100)
ALS	3.08% (690,208)	1.69% (472,869)	2.77% (682,008)	2.23% (638,929)
<i>Percentage of learners provided with learning resources</i>	100% (18,055,126)	106% (19,065,363)	100% (19,925,036)	85% (24,495,703)
<b>Output Indicators</b>				
<i>Number of schools offering the following programs:</i>				
ALIVE (public and private)	4,418	3,314	4,617	2,888
IPED (public)	3,070	3,070	3,070	3,070
SPED (public)	17,527	6558	19,143	6,558
<i>Number of public schools provided w/ learning resources</i>	47,188	44,984	44,984	44,984
<b>Support to School Learners</b>				
<b>Outcome Indicators</b>				
<i>Retention rate</i>				
Elementary	92% SY2020-2021	98.91% SY2020-2021	98.84% SY2021-2022	98.91% SY2022-2023
Secondary (Grade 7 to 12)	79% SY2020-2021	91.12% SY2020-2021	94.63% SY2021-2022	91.12% SY2022-2023

**TABLE 12-C**  
**PERFORMANCE INDICATORS OF MAJOR PROGRAMS, 2021-2023**  
**DEPARTMENT OF EDUCATION**

Program	2021		2022 Target	2023 Target
	Target	Actual		
<i>Completion rate</i>				
Elementary	90% SY2020-2021	79% SY20120-2021	95% SY2021-2022	79% SY2022-2023
Secondary (Grade 7 to 12)	77% SY2020-2021	69% SY2020-2021	82% SY2021-2022	69% SY2022-2023
<i>Proportion of the learners achieving at least nearly proficient and proficient in the National Achievement Test (NAT)</i>				
Elementary (Grade 6)	34% SY2020-2021	Not applicable	44% SY2021-2022	42% SY2022-2023
Junior High School (Grade 10)	52% SY2020-2021	Not applicable	61% SY2021-2022	18% SY2022-2023
Senior High School (Grade 12)	19% SY2020-2021	Not applicable	28% SY2021-2022	25% SY2022-2023
<b>Output Indicators</b>				
<i>Number of learners benefitting from the School Based Feeding Program</i>	1,775,349	2,781,500	1,723,808	1,678,704
<i>Number of grantees:</i>				
Education Service Contracting (ESC)	1,149,975	929,493	1,149,975	1,179,329
SHS Voucher	1,417,613	1,107,083	1,417,613	1,383,730
Joint Delivery Voucher Program	89,300	92,030	89,300	109,233
<b>Education Human Resource Development</b>				
<b>Outcome Indicators</b>				
<i>Increase in percentage of public schools conducting schools learning action cell sessions</i>	5%	27% (38,225)	5%	5%
<b>Output Indicators</b>				
<i>Number of public school teachers and teaching related staff trained</i>	165,389	1,006,163	325,290	311,100

Source: NEP 2023

## VII. COA FINDINGS AND RECOMMENDATIONS

- 7.1 The Commission on Audit is mandated by the Philippine Constitution to submit to the President and to Congress an annual audit report (AAR) on the financial condition and operation of government agencies.
- 7.2 Table 13 summarizes the status of the DepEd's compliance with the COA recommendations as of 31 December 2021. OSEC posted 80.3% compliance rate having implemented 171 of the 213 COA recommendations. Among DepEd attached agencies, NCCT posted the highest compliance of 90.0% (27 out of 30 recommendations) followed by NBDB with 68.8% (11 out of 16) and PHSA with 58.8% (10 out of 17). Both ECCDC and NM posted low compliance rates at 42.1% (8 out of 19) and 40.9% (36 out of 88), respectively.

**TABLE 13**  
**STATUS OF IMPLEMENTATION OF COA RECOMMENDATIONS**  
**(AS OF DECEMBER 31, 2021 )**  
**DEPARTMENT OF EDUCATION**

Particulars	2021				
	Total	Implemented		Not Implemented	
		Number	(%)	Number	(%)
OSEC	213	171	80.3	42	19.7
NBDB	16	11	68.8	5	31.3
NCCT	30	27	90.0	3	10.0
NM	88	36	40.9	52	59.1
PHSA	17	10	58.8	7	41.2
ECCDC	19	8	42.1	11	57.9

*Source: Annual Audit Reports 2021 (Part 3)*

7.3 Highlights of COA Audit findings, observations and recommendations are outlined below:

- ❑ *COVID-19 Response - Basic Education-Learning Continuity Plan (BE-LCP).* Under *Bayaniban to Heal as One Act* (R.A. 11469 or *Bayaniban I*) and *Bayaniban to Recover as One Act* (R.A. 11494 or *Bayaniban II*), a total of P16.4 billion was allotted for release to DepEd in 2021 primarily for the implementation of BE-LCP. Of this amount, P2.4 billion or 15% was allotted for the purchase of laptop computers for DepEd teaching personnel to enable them to efficiently adopt technology-based teaching modalities.
- ❑ The COA noted that the laptop computers procured thru the Procurement Services of the Department of Budget and Management (DBM-PS) were of low-end processor and pricey for an entry level type laptop at a unit price of P58,300. The DepEd's Agency Procurement Request (APR) indicated a market price of P35,046.50 per unit for a total of 68,500 units. The huge difference of P23,253.50 per unit price resulted in significant decrease by roughly 28,000 units purportedly for distribution to intended recipient-teachers which could have helped them in performing their tasks in the blended learning set-up. Consequently, some 28,000 teachers were deprived of the possible benefits from the supposed provision of laptop computers.
- ❑ Other deficiencies noted in the procurement of laptops for teachers include: a) lack of documentary requirements to support the fund transfer to DBM-PS amounting to P2.4 billion; b) non-posting of the notices, contract award and other documents on DepEd's official website; c) non-submission of required documents for awarded procurement contract per COA Circular No. 2009-001; and d) the transferred amount of P2.4 billion to DBM-PS remained unliquidated due to non-submission of supporting documents by DBM-PS.
- ❑ *Textbook/Instructional Materials Program.* Per COA 2021 AAR Report, DepEd registered zero percent physical accomplishment in the procurement of manuscripts



and textbooks/learning materials under its Textbook and Other Instructional Materials Program for CY 2021 due to delay in procurement activities in the DepEd Central Office and the PS-DBM, thus had deprived its learners and teachers of adequate and quality learning materials in the public schools nationwide.

- ❑ *Non-compliance to Republic Act 8047 or the Book Publishing Industry Development Act.* The COA issued Notice of Disallowance (NOA) to DepEd for the payments made to printers for the printing of manuscripts of Learner's Materials in violation of sections 10 and 11 of RA 8047 or the Book Publishing Industry Development Act which created the National Book Development Board (NBDB). The law was enacted to develop the country's book publishing industry and mandated that the DepEd shall phase out its elementary and secondary textbook publication and distribution functions and shall support the phasing in of private sector publishers to assume these functions under the supervision of the NBDB. The RA 8047 specifically removed from DepEd the responsibility to produce books and learning materials. Similar audit observations were communicated by COA to the NBDB.

7.4 DepEd's compliance with COA's recommendations as prescribed in the 2020 AAR will be monitored and evaluated in the next annual audit report.

## REFERENCES:

Basic Education Development Plan 2030  
Budget of Expenditure and Sources of Financing 2023  
Commission on Audit Annual Audit Report 2021, Department of Education,  
Department of Education Consolidated Financial Annual Report No. 1, 2021  
Department of Education Order No. 27, s 2022  
Department of Education Order No. 30, s 2020  
General Appropriations Act, 2021-2022  
National Expenditure Program, 2023  
Socioeconomic Report 2021, National Economic and Development Authority (NEDA)  
Staffing Summary 2023, DBM  
Statement of Appropriations, Allotments, Obligations, Disbursement and Balances, 2020-2021, DBM  
Status of COVID-19 Releases as of 31 December 2021, DBM

**EXPENDITURE PROGRAM BY GENERAL EXPENSE CLASS, 2021-2023  
(AMOUNTS IN MILLION PESOS)**

Particulars	2021					2022					2023				
	PS	MOOE	CO	FinEx	TOTAL	PS	MOOE	CO	FinEx	TOTAL	PS	MOOE	CO	FinEx	TOTAL
OSEC	487,435.4	104,802.5	20,207.4	-	612,445.3	513,481.0	97,917.5	20,372.7	-	631,771.2	555,968.8	135,358.8	18,374.8	-	709,702.4
NBDB	32.3	61.4	2.6	-	96.3	27.9	75.1	4.6	-	107.6	44.2	24.0	-	-	68.2
NCCT	11.3	17.6	-	-	28.9	12.4	22.0	6.6	-	41.0	17.9	15.2	-	-	33.1
NM	211.7	275.9	91.0	-	578.5	199.1	317.9	181.0	-	698.1	190.2	270.1	-	-	460.3
PHSA	35.7	50.2	15.9	-	101.8	39.0	63.9	4.0	-	106.8	40.3	63.4	-	-	103.7
ECCDC	15.4	216.0	1.2	-	232.6	15.9	238.3	1.4	-	255.6	16.0	46.9	-	-	62.9
NAS	-	-	-	-	-	66.2	277.1	-	-	343.4	7.5	219.7	-	-	227.2
<b>Total</b>	<b>487,741.7</b>	<b>105,423.6</b>	<b>20,318.0</b>	<b>-</b>	<b>613,483.4</b>	<b>513,841.7</b>	<b>98,911.8</b>	<b>20,570.2</b>	<b>-</b>	<b>633,323.7</b>	<b>556,284.9</b>	<b>135,998.2</b>	<b>18,374.8</b>	<b>-</b>	<b>710,657.9</b>

Source: FY 2023BESF

**EXPENDITURE PROGRAM BY GENERAL EXPENSE CLASS, 2021-2023  
(AS PERCENT TO TOTAL AGENCY)**

Particulars	2021					2022					2023				
	PS	MOOE	CO	FinEx	TOTAL	PS	MOOE	CO	FinEx	TOTAL	PS	MOOE	CO	FinEx	TOTAL
OSEC	99.94	99.41	99.46	-	99.83	99.93	98.99	99.04	-	99.75	99.94	99.53	100.00	-	99.87
NBDB	0.01	0.06	0.01	-	0.02	0.01	0.08	0.02	-	0.02	0.01	0.02	0.00	-	0.01
NCCT	0.00	0.02	0.00	-	0.00	0.00	0.02	0.03	-	0.01	0.00	0.01	0.00	-	0.00
NM	0.04	0.26	0.45	-	0.09	0.04	0.32	0.88	-	0.11	0.03	0.20	0.00	-	0.06
PHSA	0.01	0.05	0.08	-	0.02	0.01	0.06	0.02	-	0.02	0.01	0.05	0.00	-	0.01
ECCDC	0.00	0.20	0.01	-	0.04	0.00	0.24	0.01	-	0.04	0.00	0.03	0.00	-	0.01
NAS	-	-	-	-	0.00	0.01	0.28	0.00	-	0.05	0.00	0.16	0.00	-	0.03
<b>Total</b>	<b>100.00</b>	<b>100.00</b>	<b>100.00</b>	<b>-</b>	<b>100.00</b>	<b>100.00</b>	<b>100.00</b>	<b>100.00</b>	<b>-</b>	<b>100.00</b>	<b>100.00</b>	<b>100.00</b>	<b>100.00</b>	<b>-</b>	<b>100.00</b>